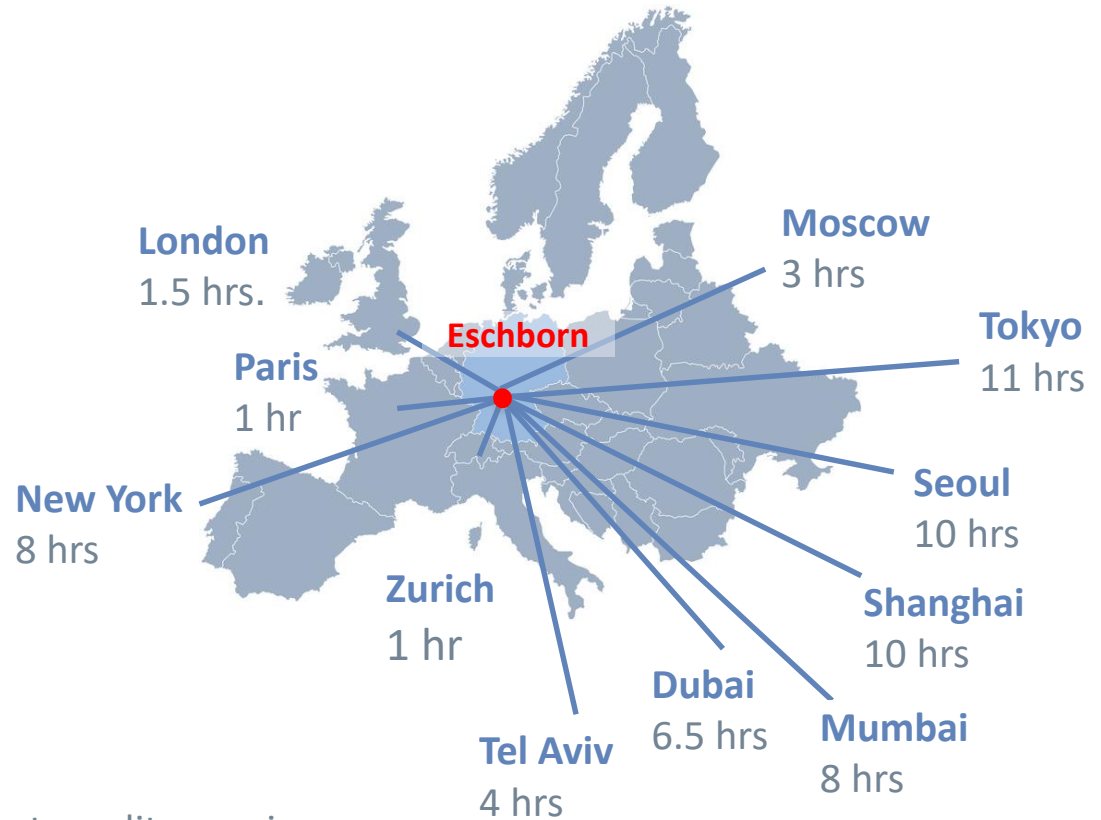


# Welcome to Eschborn





**Welcome to Eschborn!**

Welcome to the Frankfurt Rhine-Main metropolitan region -  
In the centre of Europe and at the heart of Germany!





- **4th place** in the ranking of German states\* - Hessen scores well in the areas of wealth, infrastructure and the employment market
- Approx. **12,500 foreign companies** - the largest number of registered international companies in Germany
- **1.05 million** people from **190 nations** are resident in Hessen (2017)
- **€81,300** is the GDP per person employed (**10%** higher than the German average) (2017)
- **75%** of the entire Gross Value Added (GVA) comes from the services sector
- More than **90%** of the companies in Hessen are small or medium-sized businesses



ESA Control Centre



Hessischer Landtag (State Parliament)



European Central Bank (ECB)



Hessen/Germany

\*IW-Consult Ranking 2012

Population: 6.24 million, Workers: 3.43 million (30/09/2017)

- **1st place** for Frankfurt in the ranking (“Standortindex” location index)\* of Germany's 30 largest cities. Its main strengths are education, capacity for innovation, international dimension and infrastructure
- **3rd place** as a European centre of finance and trade, **ranked 10** worldwide\*\*
- **6 clusters** define the metropolitan region: Finance, Chemistry/Pharmacy/Biotechnology, Logistics/Transport, Information & Communications Technology, Consulting, Cultural and Creative Industries
- 15 universities and technical colleges, 12 private and ecclesiastical colleges, 3 art colleges, 7 academies and 13 international schools provide education for new generations.
- 110 consulates, 60 foreign chambers of commerce



ECB against the skyline



Frankfurt Airport



Goethe University



Science Campus

\* HWWI/Berenberg City Ranking, 2013 (N = 30, largest cities in Germany according to population)

\*\* QFC: The Global Financial Centres Index 24, 2018

Population: 5.72 million, Workers: 2.27 million, Students: 244,000 (2016)

# Frankfurt Rhine-Main – A metropolitan region with a future

- **Ranked 3rd** in the FinTech regions of Germany (after Berlin and Munich)\*
- **TechQuartier** in Frankfurt = central, independent hub and community for FinTech companies
- Variety of **startup and FinTech initiatives** – Startup Safari, Fintech Forum, EY Startup Academy, Deutsche Börse Venture Network, Accelerator Frankfurt, Unibator (Goethe University), etc.
- Main focuses of the Frankfurt startup community: **Fintech, AI, Big Data & Analytics, Cybersecurity\*\***
- At least **32 business incubators** and **18 coworking spaces** have already been set up in Frankfurt Rhine-Main, with more to come. The startup ecosystem is flourishing in the region.\*\*\*
- **Target:** by 2022, Frankfurt Rhine-Main is set to become a leading international startup region\*\*\*\*



Tech Quartier in Frankfurt



Coworking-Space in Eschborn



Masterplan



FinTech

\* comdirect, FinTech-Hub-Ranking, 2017)

\*\* Startup Genome LLC, 2018

\*\*\* Wissensregion Frankfurt Rhine-Main, Wissensatlas (atlas of knowledge), 2018

\*\*\*\* Startup region Frankfurt Rhine-Main master plan, 2018



# Main-Taunus district – Major cities and natural surroundings

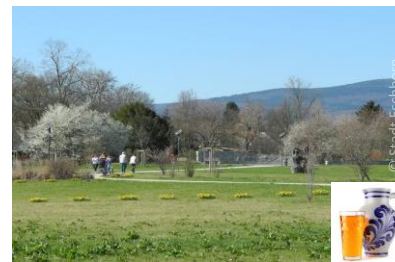
- **4th place** for the Main-Taunus district (MTK) in the regional ranking\* of the 401 districts in Germany.
- **13th place** in the "Zukunftsatlas" (Future Atlas)\*\* giving MTK **"a very good outlook"** for the future.
- **15th place** in the overall **Digitalisierungskompass** ranking \*\*\*
- The smallest administrative district in Germany (222.4 km<sup>2</sup>) **situated between** the cities of **Wiesbaden** (state capital 203.9 km<sup>2</sup>) and **Frankfurt** (248.3 km<sup>2</sup>).
- **17,300** companies generate a GDP of **EUR 106,547** per person employed, ensuring **3rd place** for the Main-Taunus district in the GDP ranking for Germany. \*\*\*\*
- Almost one in 5 commuters from Frankfurt works in the Main-Taunus district. \*\*\*\*\*
- A wide variety of recreational options thanks to the **Taunus** recreational area, the **Regional Park** and the **Apple wine route**



Eschborn industrial parks



MTZ shopping centre



View of the Taunus



Main-Taunus district

\* IW-Consult, 2018 – regional ranking – comparison of levels (N = 401 districts in Germany)

\*\* Prognos, 2016 – (N = 402 districts in Germany)

\*\*\* Prognos, Digitalisierungskompass, 2018 (N = 401 districts in Germany)

\*\*\*\* "Volkswirtschaftliche Gesamtrechnungen der Länder" (National Accounting for German states) working group 2014 (cf. Ingolstadt 1st place: €117,828)

\*\*\*\*\* Regionalverband Frankfurt, Monitoring 2016

Population: 235,708, Workers: 95,387 (2016)



Eschborn, situated at the eastern edge of the Main-Taunus district and just next door to the city of Frankfurt, has a **population of 21,300** and is a **place of work for more than 35,600 people**. Eschborn is a modern, international office centre and yet at the same time a city surrounded by nature with an attractive quality of life.



# Eschborn - Boosting the economy in the Main-Taunus district

- **4,350 companies** - from think tanks to global enterprises, Eschborn offers something for everyone.
- More than **100** high-tech companies make Eschborn one of the main innovation centres in the Frankfurt Rhine-Main region. Businesses benefit from the **outstanding infrastructure** in the industrial parks, which are equipped with high-speed fibre optic networks. As well as **IT, telecommunications and high-tech companies** such as Vodafone, BT, Samsung, LG, Yaskawa and SAP, there are also **many large businesses in the finance and consulting sector and in the chemicals, pharmaceuticals and life sciences sector**, such as Deutsche Bank AG, Deutsche Börse AG, Commerzbank, PSD Bank, EY and Rödl & Partner, Abbott, Terumo, NSK etc.
- Federal organisations such as the "Bundesamt für Wirtschaft & Ausfuhrkontrolle" (Federal Office for Economic Affairs and Export Control) and the "Deutsche Gesellschaft für Internationale Zusammenarbeit GmbH" (GIZ or German Federal Enterprise for International Cooperation) are also based in Eschborn.



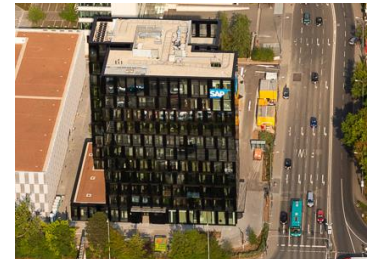
EY



GIZ



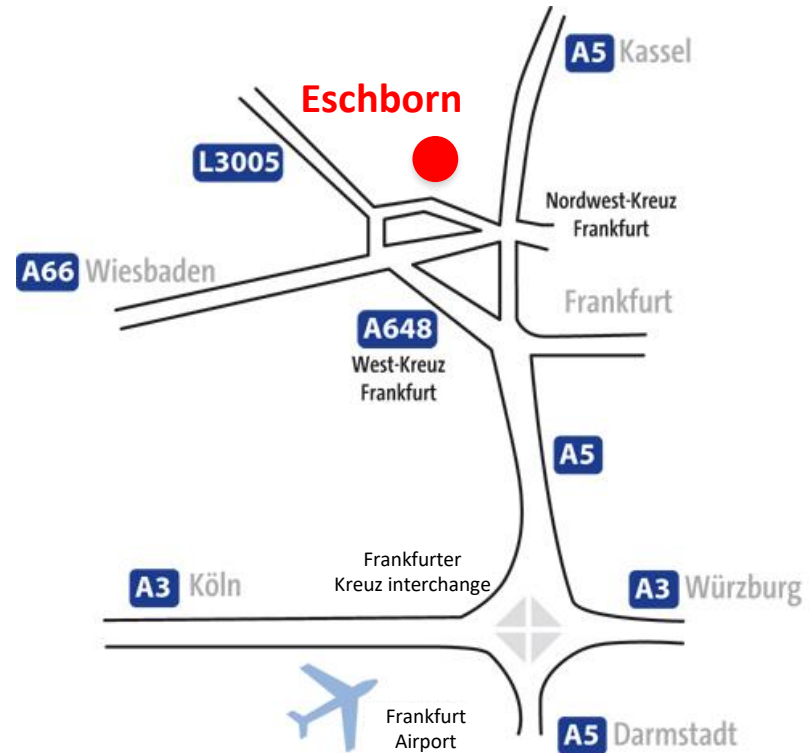
Deutsche Börse



SAP







**Just 10 minutes by car from Eschborn is the international Frankfurt Airport.**  
You can travel all over the world from here - guaranteeing success for your business.  
More than 99 airlines - 311 destinations - 97 countries\* - 64.5 million passengers\*\*

(\*Frankfurt airport, 2017)



At the **intersection of the North-South and East-West axes**, with the **A66** Wiesbaden/Frankfurt, **A5** Hanover/Basel and **A3** Cologne/Regensburg all within easy reach of Eschborn. The **railways (ICE)** also offer great connections.







Niederhöchstadt sculpture park



Summertime, Eschenplatz

The population of the town has grown rapidly in parallel with its economic development. New residential areas have sprung up, as well as new schools, sports facilities, nurseries, playgrounds, parks and all other kinds of infrastructure.

A wide variety of some 100 associations offer Eschborn residents plenty to do in their spare time, not least with an extensive cultural programme.

**Population:** **21,396** (2017)

**Purchasing power:** **EUR 30,589 /capita** (GfK, 2018)  
**133.3%** (Germany =100 %)

**Property tax B:** **140%**



# Esch**BORN FOR BUSINESS**

## 5 Industrial Parks for your success







The town's industrial parks are a forum for global businesses and offer new companies some interesting opportunities.

Some of the major companies that have established themselves in Eschborn include **Abbott, Cisco, Commerzbank, Compass Group, Deutsche Bank, Deutsche Börse AG, EY, Huawei, ICICI Bank, LG, Orange Business, Randstad, Samsung, SAP, Swatch, Techem, Vodafone, VR-Leasing, Yaskawa etc.**

Many office buildings have already been constructed to high architectural and ecological standards in Eschborn - and our location is continuing to grow. The trade tax rate is also appealing to businesses and the excellent networks encourage this development.

**Trade tax rate: 330% (since 01/01/2016)**

**Property tax A (B): 170% (140%)**





Industrial Park West



Camp Phoenix Park



Industrial Park East

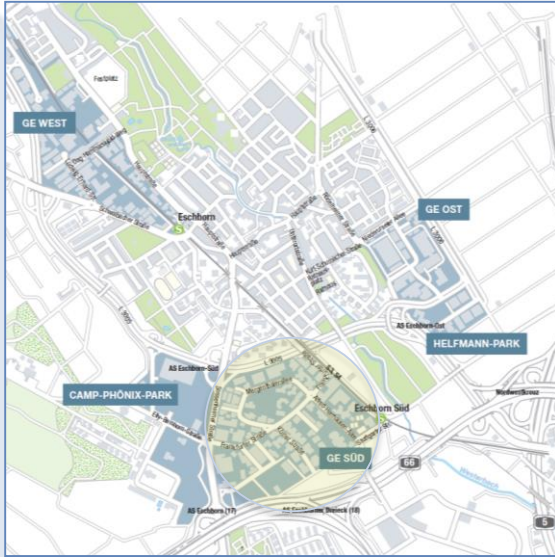


Helfmann Park



Industrial Park South





123 acres, approx. 21,000 jobs, situated on the A66 motorway and the rail network. Offices of: Deutsche Bank, BAFA, BT, Zühlke, gft, Deutsche Börse, Vodafone, Samsung, Huawei, EY, Verbatim, goldgas, SAP, LG etc.







60 acres, approx. 1,200 jobs, situated on the A66 motorway. Offices of XXXL, Mömax, NSK-Europe, Toyota Nix, Rewe, Sanitär Richter & Frenzel, dm, KFC, Poco, denn's Biomarkt, Aldi, Fressnapf, Elements, Küchen Atelier Grohs, Golfhouse etc.

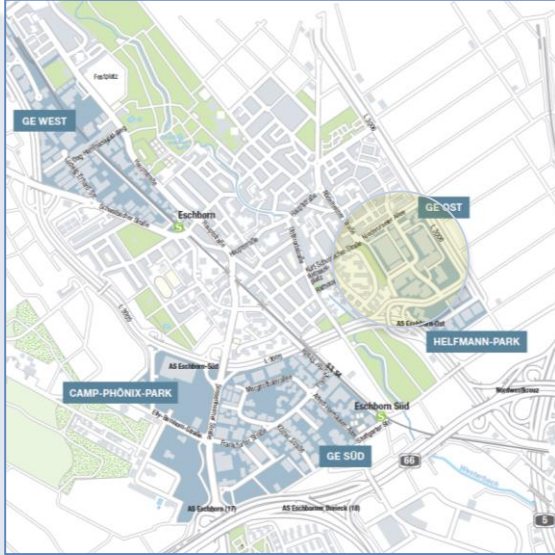




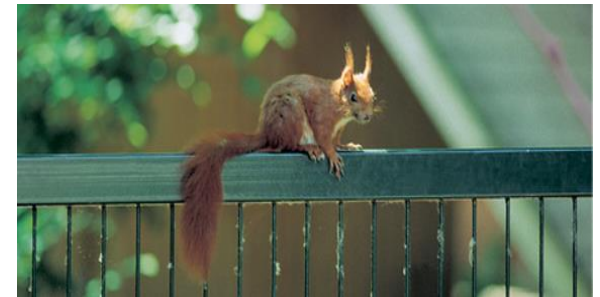
99 acres, approx. 8,400 jobs,  
L3005 leading to the A66  
motorway, rail network. Offices  
of: Cisco, Yaskawa, Fotoco, D-  
Link, VR-Leasing, techem, GIZ,  
Monster, Unielektro, Kotra,  
Terumo, G+K Automobile,  
Siemens Healthcare etc.







25 acres, approx. 2,500 jobs.  
Offices of: Selgros, Aldi, Lidl,  
BabyOne, NuSkin, Das  
Futterhaus, Reddy Küchen,  
McTREK, Dt. Apothekerverein,  
Ingenico, Rossmann etc.







19 acres, approx. 2,500 jobs,  
the most recent industrial park  
with offices of: Commerzbank,  
Waters, Compass Group,  
Accovion, ConCardis, Abbott,  
Randstad, Mercure Hotels etc.



## **Eschborn 2018 location exposé**

[www.eschborn.de/wirtschaft/expose-und-standortmagazin/](http://www.eschborn.de/wirtschaft/expose-und-standortmagazin/)

## **Development plans and land values in Eschborn**

[www.eschborn.de/de/wirtschaft/bebauungsplaene-bodenrichtwerte/](http://www.eschborn.de/de/wirtschaft/bebauungsplaene-bodenrichtwerte/)

## **FrankfurtRheinMain in figures**

[www.eschborn.de/fileadmin/eschborn/Bilder/Wirtschaft/FRM\\_in\\_Zahlen\\_2017\\_deutsch-1.pdf](http://www.eschborn.de/fileadmin/eschborn/Bilder/Wirtschaft/FRM_in_Zahlen_2017_deutsch-1.pdf)

## **Prices for businesses**

[www.frankfurt-main.ihk.de/images/broschueren/Gewerbemarktbericht%202016.pdf](http://www.frankfurt-main.ihk.de/images/broschueren/Gewerbemarktbericht%202016.pdf)

## **Intelligence report 2016 - Benchmark study FrankfurtRheinMain and the German metropolitan region**

[www.wissensportal-frankfurtrheinmain.de/media/custom/2393\\_153\\_1.PDF?1467719975](http://www.wissensportal-frankfurtrheinmain.de/media/custom/2393_153_1.PDF?1467719975)

## **Cluster study of FrankfurtRheinMain - competitive advantages through networking**

[www.wissensportal-frankfurtrheinmain.de/media/custom/2393\\_60\\_1.PDF?1401268162](http://www.wissensportal-frankfurtrheinmain.de/media/custom/2393_60_1.PDF?1401268162)

## **Prognos – Future Atlas 2016**

[www.prognos.com/publikationen/zukunftsatlas-regionen/zukunftsatlas-2016/](http://www.prognos.com/publikationen/zukunftsatlas-regionen/zukunftsatlas-2016/)

## **Newcomers Guide**

[www.newcomers-network.de/rhein-main/newcomers-guide/](http://www.newcomers-network.de/rhein-main/newcomers-guide/)





## Municipal Authority of the town of Eschborn

Rathausplatz 36  
65760 Eschborn  
Germany  
[www.eschborn.de](http://www.eschborn.de)



### **Adnan Shaikh**

Mayor of Eschborn

T + 49 (0) 61 96 / 490 100

F + 49 (0) 61 96 / 490 400

M [a.shaikh@eschborn.de](mailto:a.shaikh@eschborn.de)



### **Dong-Mi Park-Shin**

Head of Economic Development

T +49 (0) 6196 / 490 107

F +49 (0) 6196 / 490 480

M [wirtschaft@eschborn.de](mailto:wirtschaft@eschborn.de)

**We look forward to welcoming you  
to Eschborn!**

